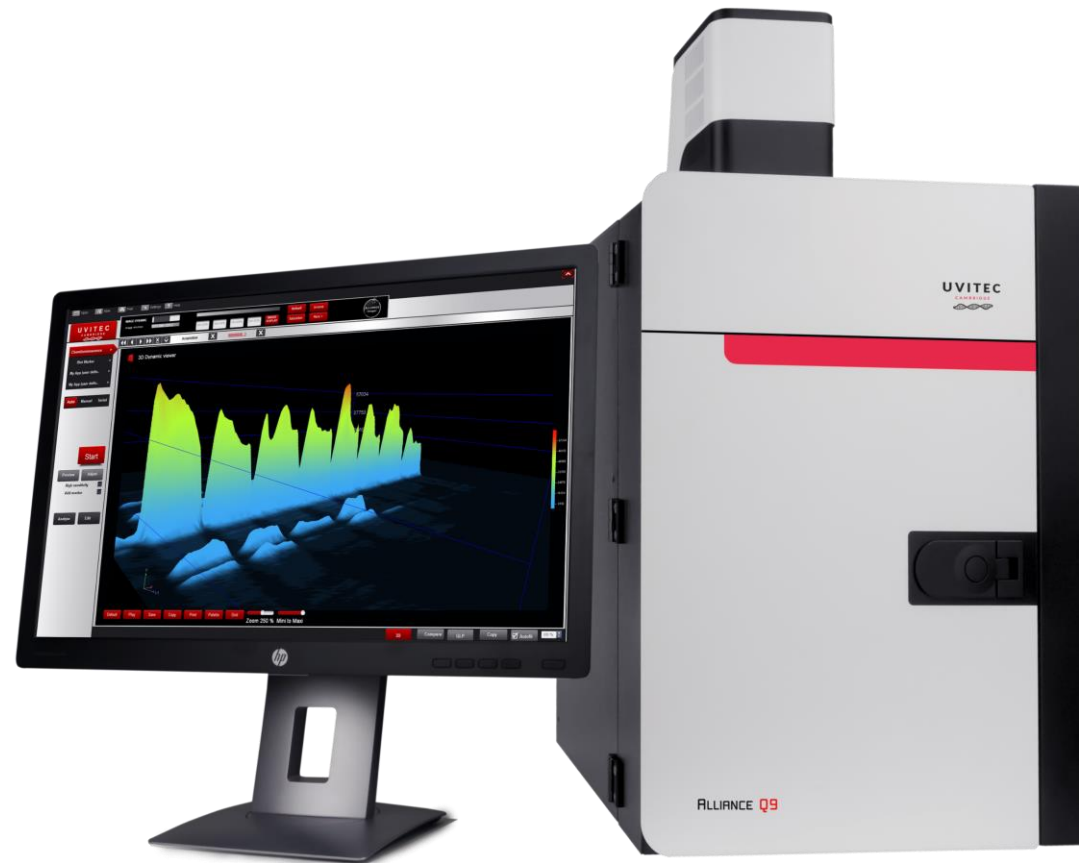
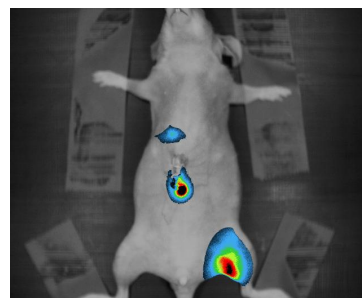
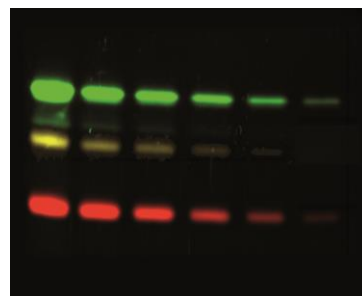
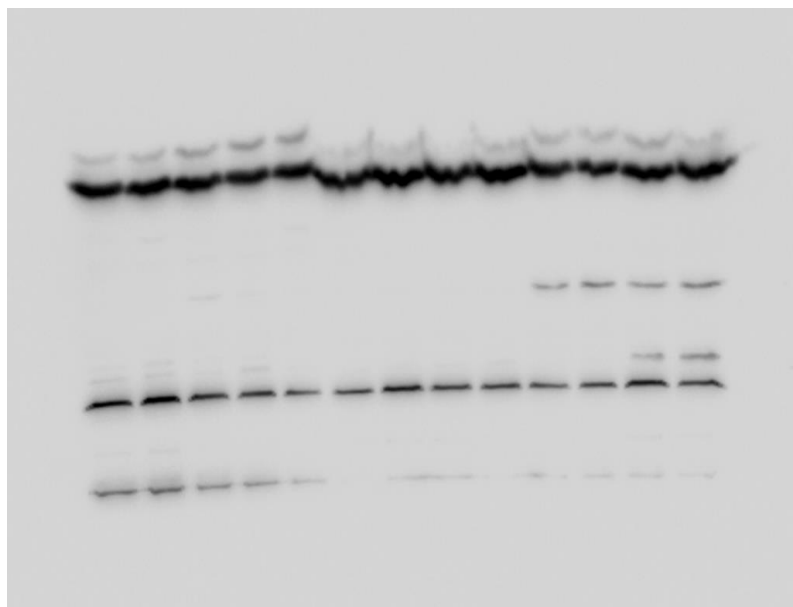


UVITEC LTD.
ALLIANCE Q9 ADVANCED



ALLIANCE **APPLICATIONS**



Chemiluminescence

Westerns, Dot Blots, Luciferase...

Spectral/Multiplex Fluorescence

IR, Red/NIR, Green, Blue, UV

Animal-Imaging

Fluorescence & Bioluminescence

DNA/RNA Gels

EtBr & Safe Stains (SYBR, GelRed, SYPRO...)

Protein Gels

Coomassie Blue, Silver, Cooper, Red Ponceau...

Colonies

Petri Dish, Blue Fluorescent plates



FULL IMAGING PLATFORM Q9 ADVANCED

Sensitive

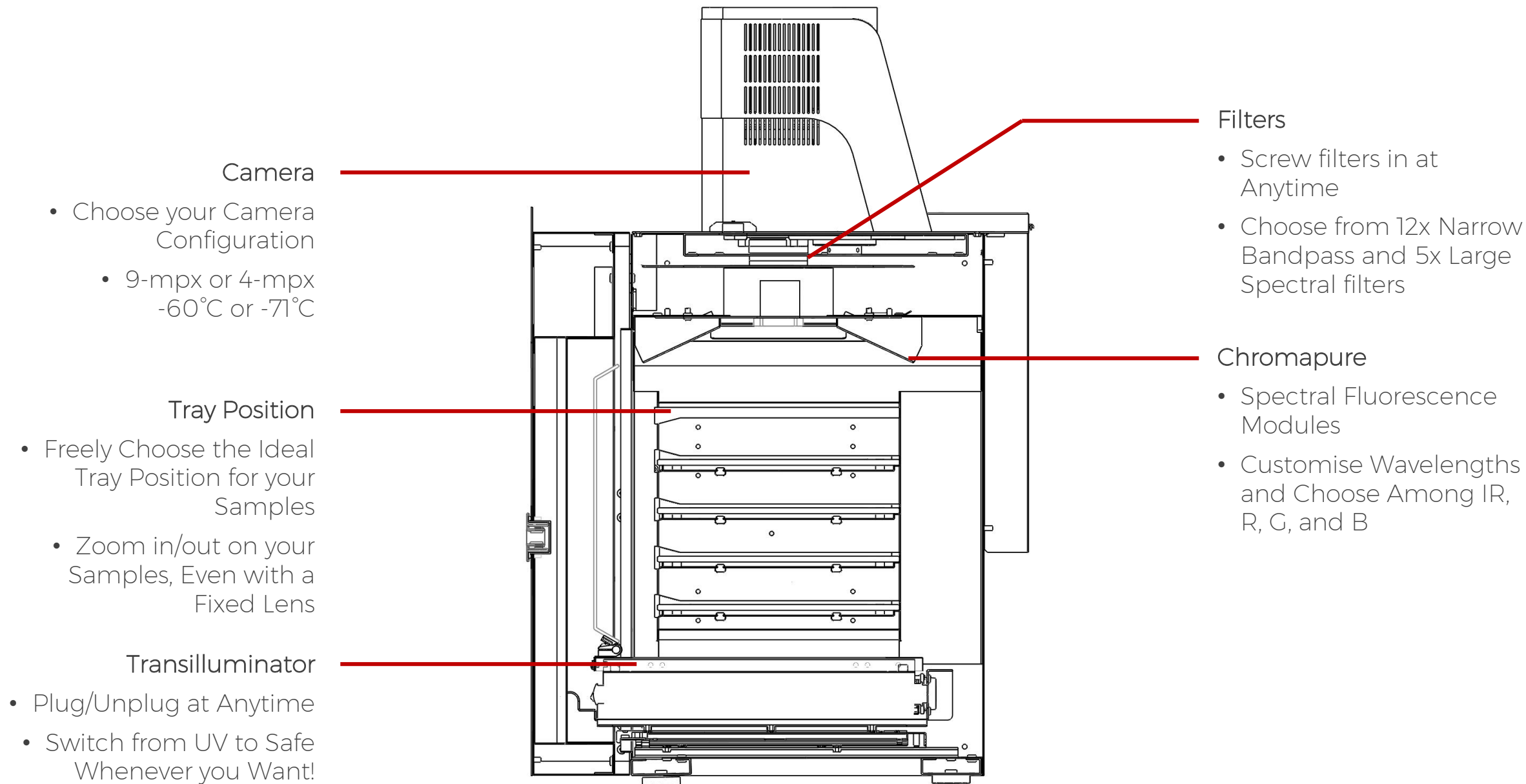
- Up to -71°C Cooling
- Direct Light Collection
- 4.8 OD Dynamic Range

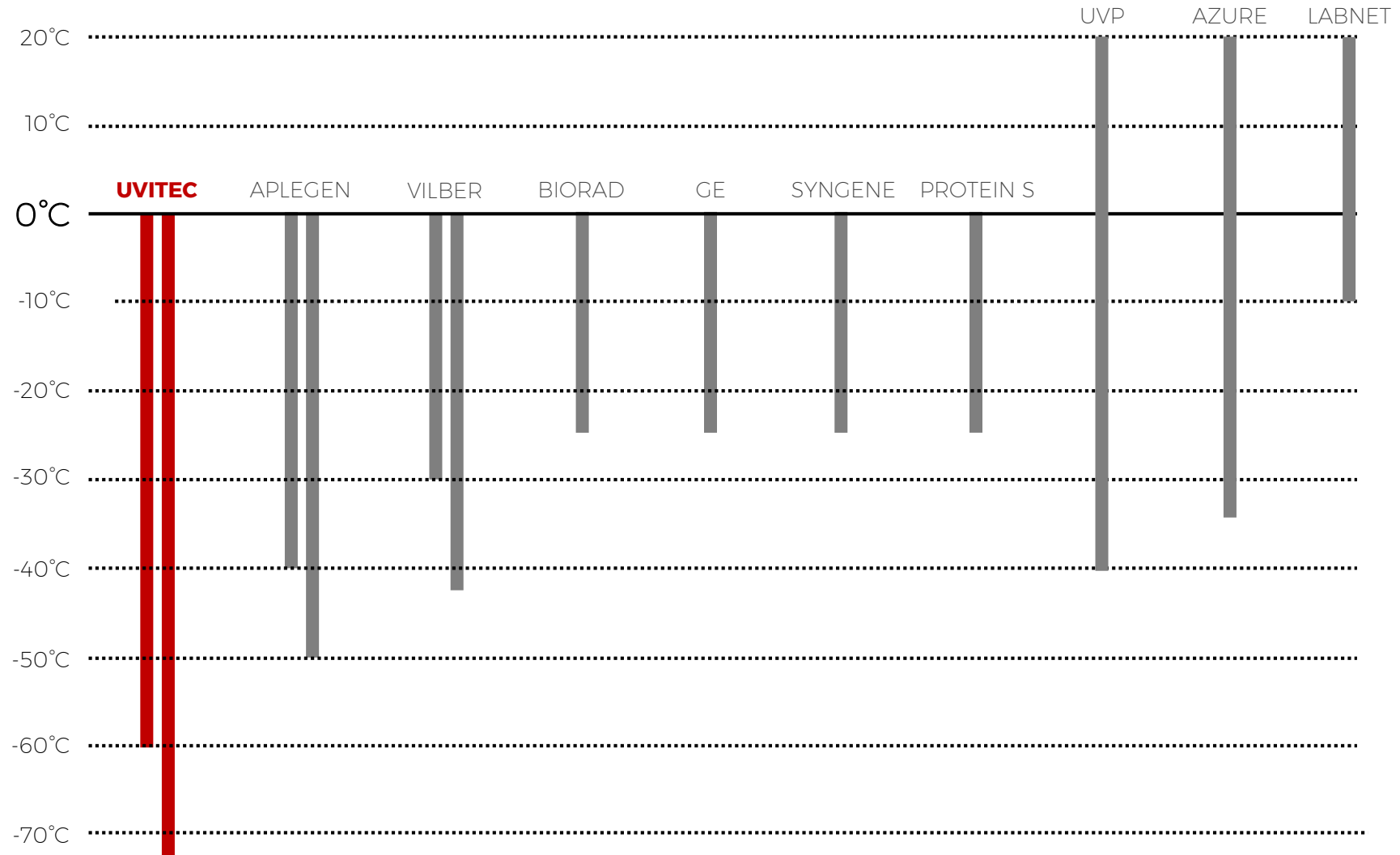
Customisable

- 100% Plug-and-Play
- Upgrade as You Wish
- Don't Use it, Don't Pay it

Advantageous

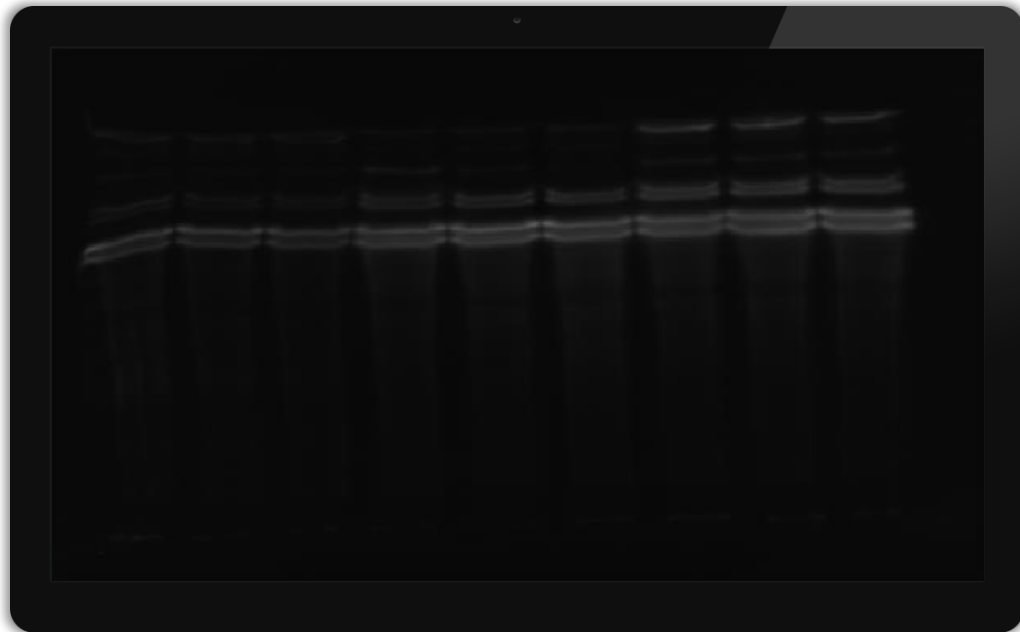
- 24x20cm Imaging Area
- Endless Applications
- For Each client Profile, a Q9





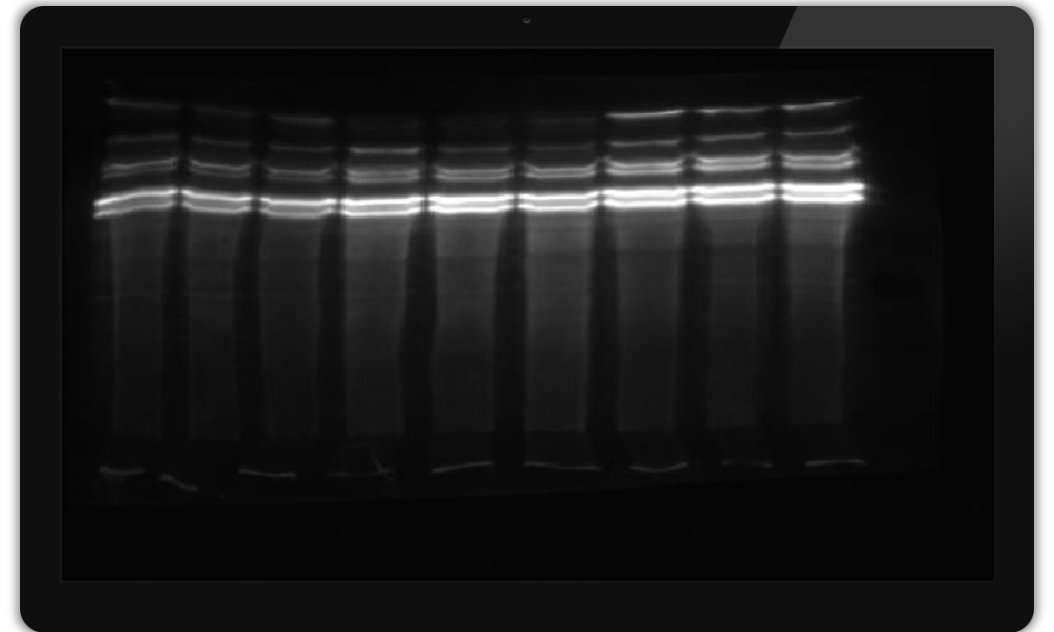
-25°C
2-STAGE

CHEMIDOC MP



-60°C
3-STAGE

ALLIANCE Q9



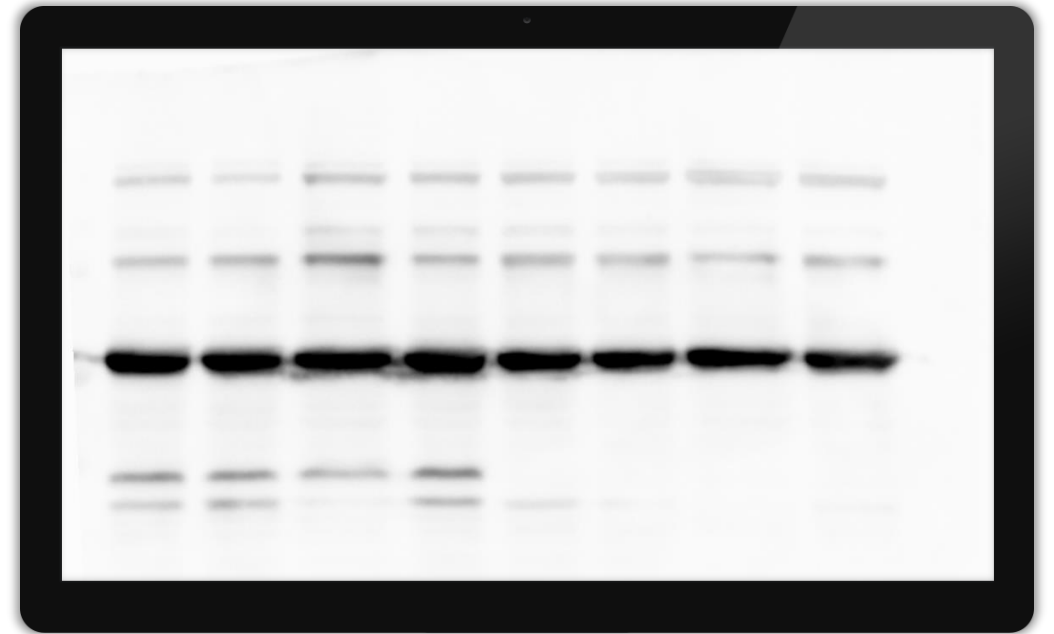
-25°C
2-STAGE

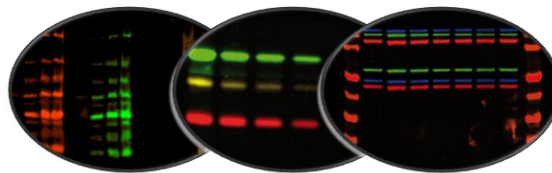
CHEMIDOC MP



-60°C
3-STAGE

ALLIANCE Q9

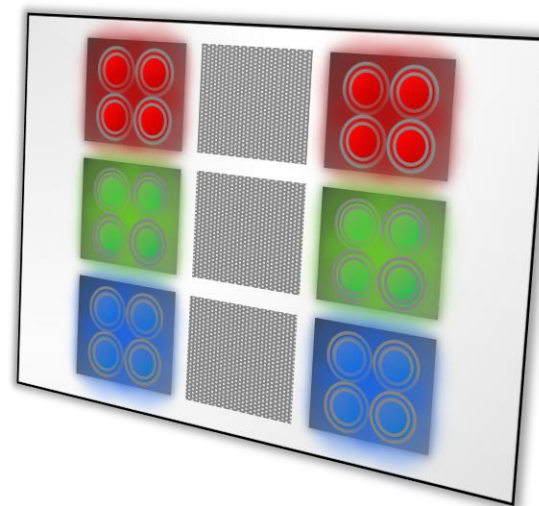
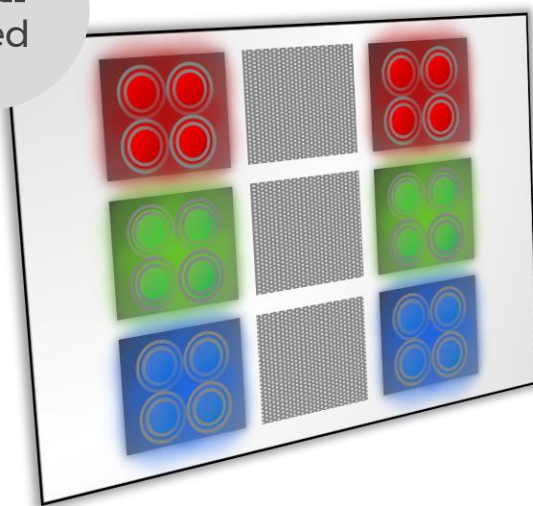


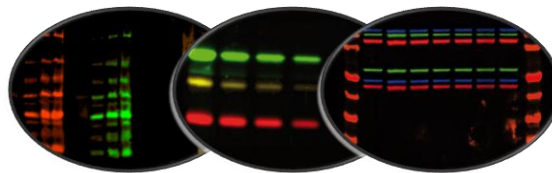


CHROMAPURE® FLUORESCENCE

Optimal Excitation Surface & Irradiation

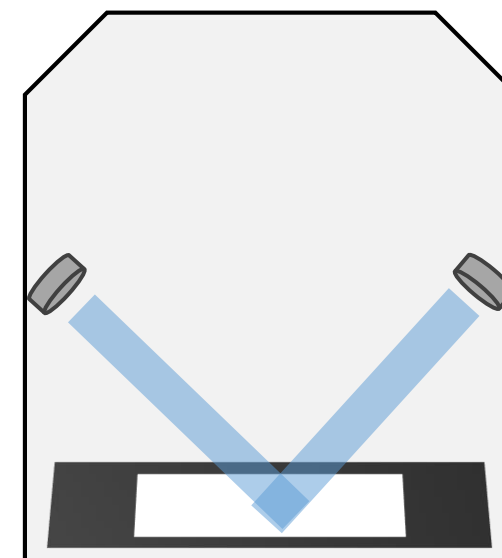
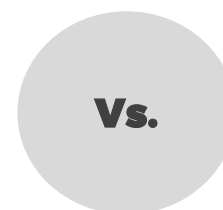
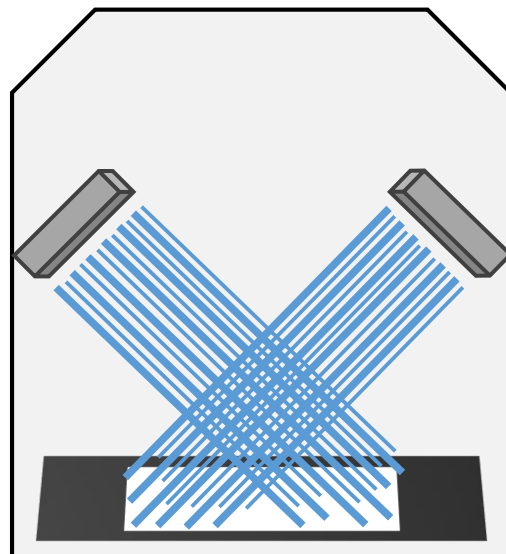
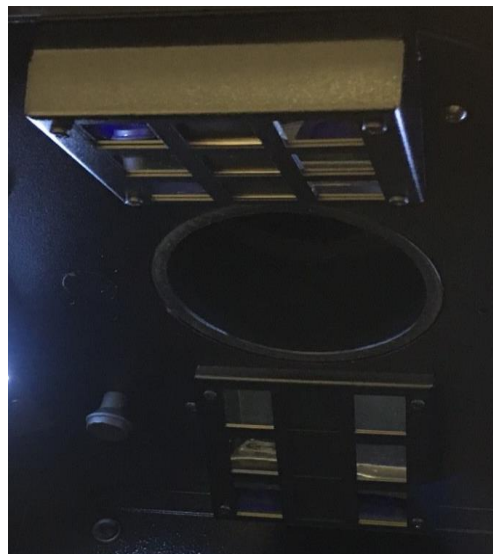
dual
sided

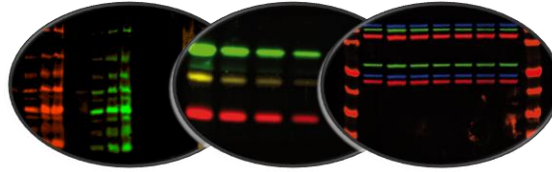




CHROMAPURE® FLUORESCENCE

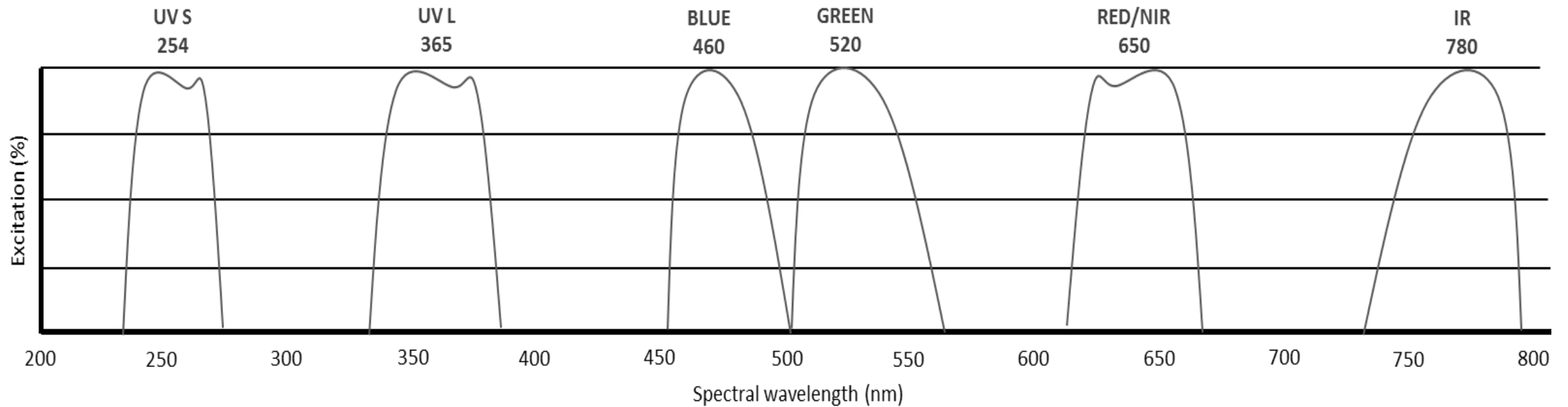
Optimal Excitation Surface & Irradiation



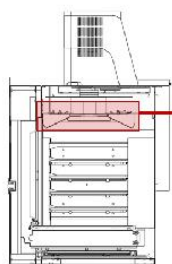


CHROMAPURE® FLUORESCENCE

Optimal Excitation Surface & Irradiation



CHROMAPURE[®] Unrivalled fluorescence



EXCEPTIONAL SAMPLE IRRADIATION

The Chromapure[®] fluorescence is based on a unique dual-side excitation patented concept ensuring a powerful and complete sample coverage, regardless of where the protein of interest is located. This technology also enables the highest level of light uniformity and homogeneity, and outstanding sample irradiation.

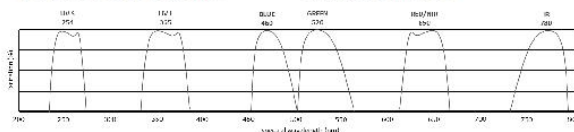


NARROW-BAND EXCITATION

New Chromapure[®] fluorescence modules feature a full network of super-bright net-LED exciters, proving up to 3x as bright as competition.

CUSTOMISE YOUR MODULES

We manufacture our modules on-demand, based on your applications and requirements. You choose the wavelengths, we do the rest!



SUPERIOR SENSITIVITY, EXCELLENT DETECTION

Equipped with Chromapure[®] modules and enhanced optics for fluorescence, new Alliance Q9 imagers now offer an outstanding signal-to-background ratio and unrivalled signal detection for your samples, even with the lowest protein concentration, across the entire spectral wavelength.

WITH CHROMAPURE, YOU GET:

1

Total sample irradiation

Dual-sided technology - diodes network

2

Narrow bandpass excitation

Super-bright net-LED diodes - laser class II

3

+/- 5% homogeneity ratio

Outstanding light homogeneity across samples

4

2x as powerful as Chroma

Enhanced net-LED diodes - 8 to 16W

5

Up to 3x as bright as competition

Vs. single, large-spectral spot-LED fluorescence

THE ALLIANCE Q9 ADVANCED COMES WITH



Large Choice of Optional Transilluminators

- Single or dual Wavelength
- Standard or Uvipure
- UV or Safe or White

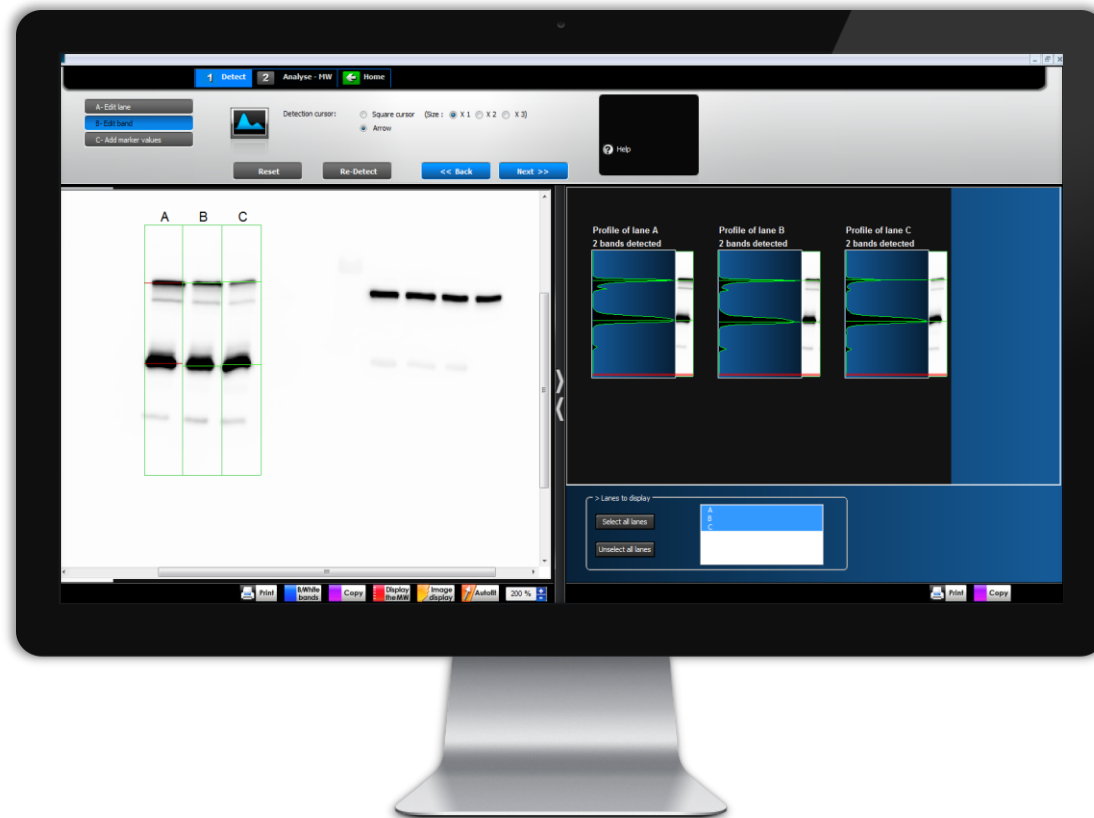
THE ALLIANCE Q9 ADVANCED COMES WITH



Uvipure Transilluminator Option

- Uvitec Patented Technology
- Invisible UV bulbs
- Crispier, sharper images
- Ideal for safe stains

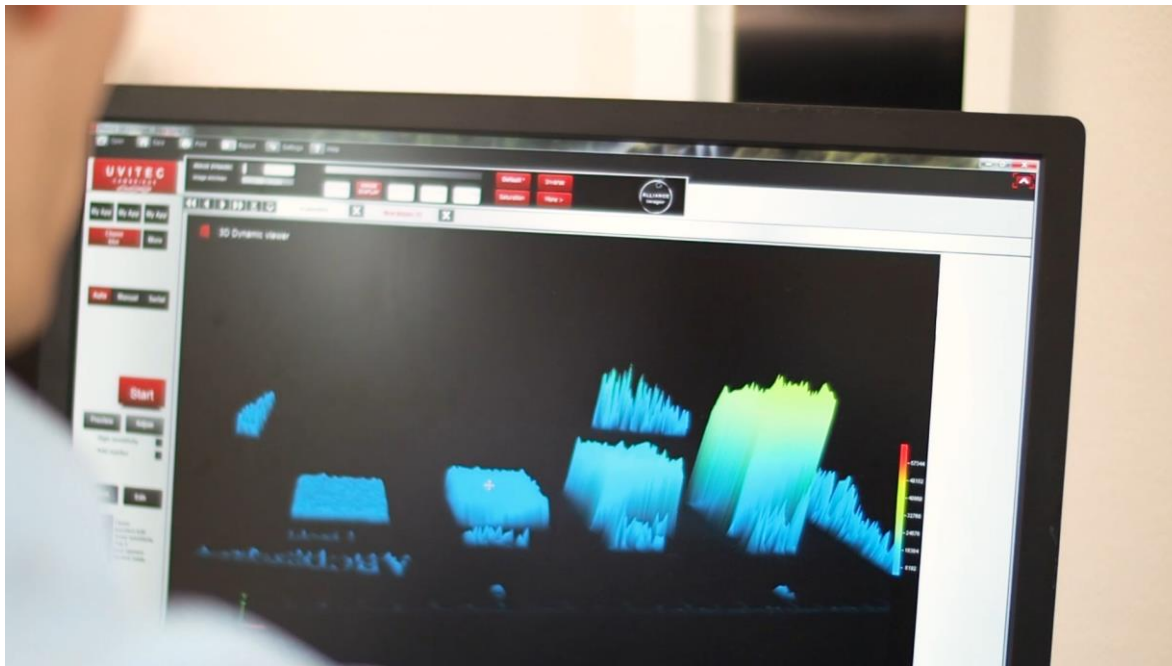
THE ALLIANCE Q9 ADVANCED COMES WITH



Alliance-Q9 Software

- Fully license-free
- Unlimited users & computers
- Acquisition | Edition | Analysis
- MW, Quantification, Normalisation

THE ALLIANCE Q9 ADVANCED COMES WITH

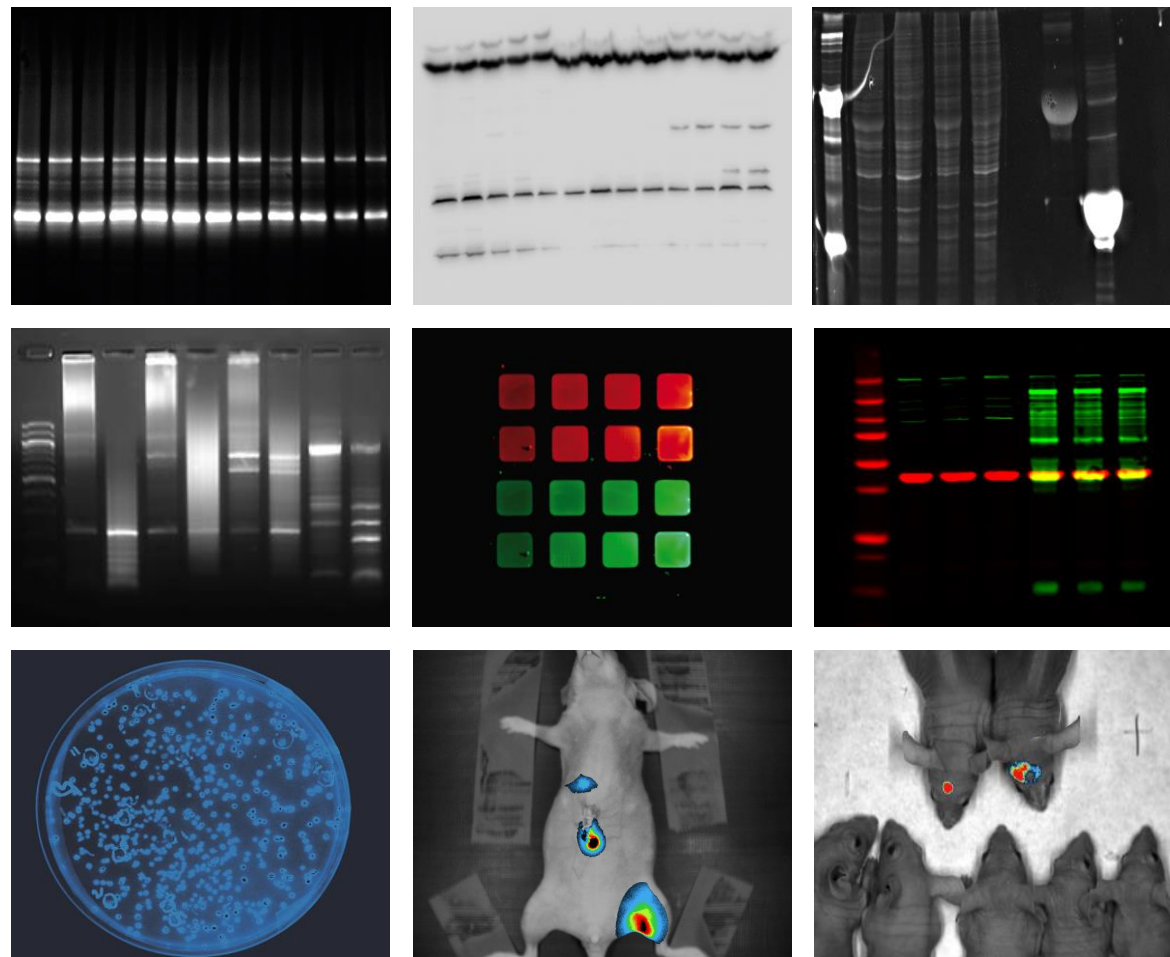


On-board 3D views

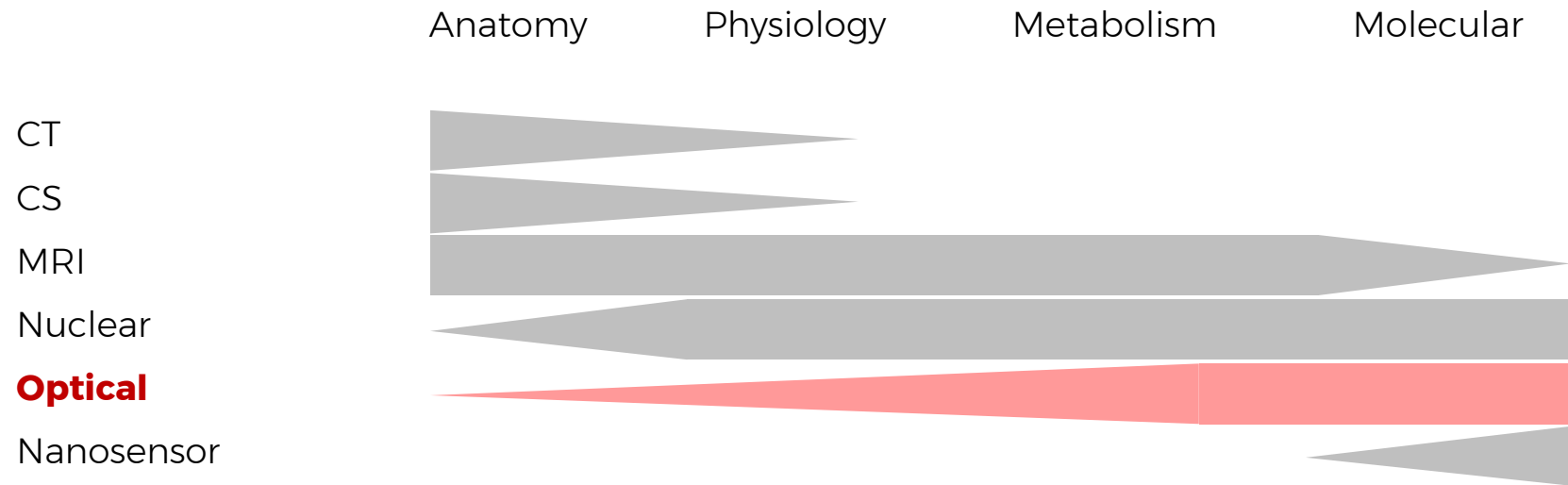
- Check band saturation at a glance
- Monitor background noise signal
- Adjust exposure times accordingly

APPLICATION FOCUS ON ALLIANCE Q9

ECL Western Blot | Chemi
ELC+ Western | Chemiluminescence
Stain-Free Gel | Uvire 312nm
Ethidium Bromide | trans-UV 312nm
IR Fluorescence | IR-R Chromapure
Cy Multiplex | RGB Chromapure
eGFP Colony | Blue Chromapure
Luciferase Bioluminescence | Chemi
IRFP In-Vivo | IR Chromapure



APPLICATION FOCUS
ANIMAL IMAGING

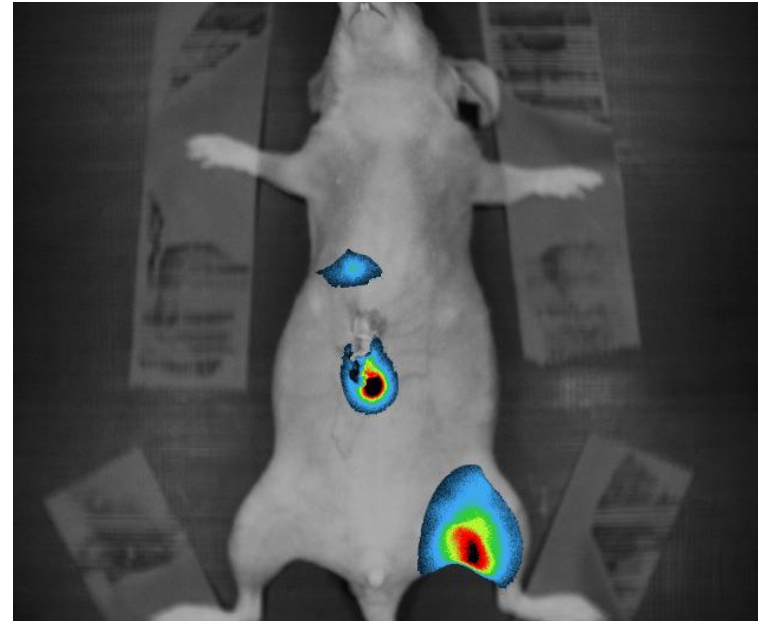


APPLICATION FOCUS
ANIMAL IMAGING

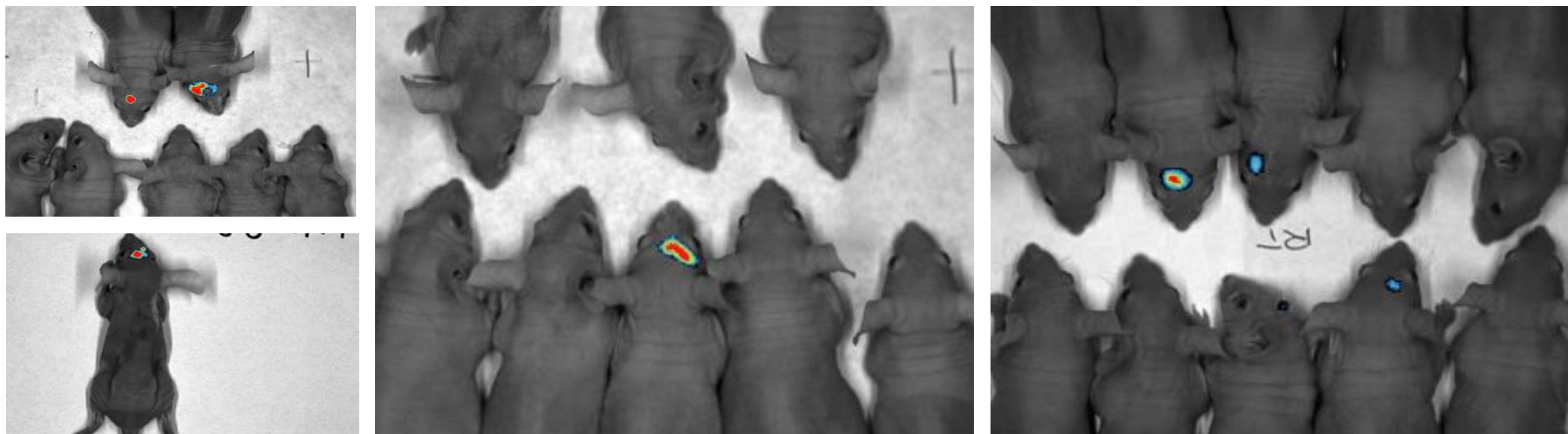
Tumor imaging

Cell labelling

Infectious diseases



APPLICATION FOCUS ANIMAL IMAGING



Universita di Bologna, Italy - Brain tumor research
IRFP Fluorescent Protein - IR Chroma 740nm & F-820IR filter
Alliance 9.7 Chroma, 2015



ALLIANCE Q9 ADVANCED
UVITEC

9.2 MPX

Up to -71°C

24x20cm

LED Panels or Net-LED Network

Narrow Band filters



CHEMIDOC MP
BIORAD

1.5 MPX (binning)

-25°C

21x16cm

Spot-LED Only

Large Spectral Only



SOLO S6
VILBER

6 MPX

-30°C

14x12cm

-

Narrow Band



IBRIGHT CL1000
THERMO FISHER

9.1 MPX

-25°C

22x18cm

Spot-LED Only

Large Spectral Only



CHEMIDOC IT2 815
UVP/AJ

8.1 MPX

-57°C from Ambient

21x17cm

Spot-LED Only

Large Spectral Only



1

WITH UVITEC, YOU:

Get greater images

Up to 18 megapixel extended resolution

2

Cut off background noise

Detecting up to the weakest light signals

3

Boost signal detection

Up to femtogram 10^{15} g - even with lowest concentration

4

Save money

Buy what you need now - upgrade later

5

Image larger samples

Largest field of view on the market



“

We have been extremely pleased with its performance. Our system is very simple and intuitive to use, and most people get on fine with minimal instruction.

It is an extremely well-built system and has been used daily for both the chemiluminescent work and for imaging DNA gels for almost a year now with no requirement for maintenance or attention at all.

”



Dr. James Dunford - Senior Research Associate
james.dunford@ndorms.ox.ac.uk